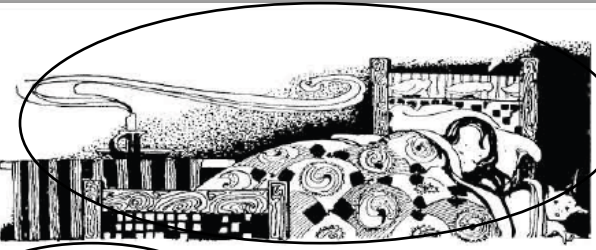


Based on “The Land of Nod”, what does Robert Louis Stevenson believe about dreams?

In this lesson you will learn  
how to identify the theme of  
a text by determining meaning  
from clues in the text.

# Let's Review



**The Land of Nod**  
by **Robert Louis Stevenson**  
from, *A Child's Garden of Verses* (1916)

From breakfast on through all the day  
At home among my friends I stay,  
But every night I go abroad  
Afar into the land of Nod.

All by myself I have to go,  
With none to tell me what to do--  
All alone beside the streams  
And up the mountain-sides of dreams.

The strangest things are these for me,  
Both things to eat and things to see,  
And many frightening sights abroad  
Till morning in the land of Nod.

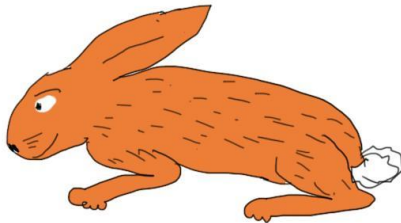
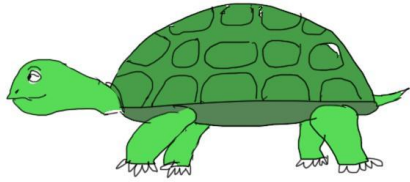
Try as I like to find the way,  
I never can get back by day,  
Nor can remember plain and clear  
The curious music that I hear.

Illustration by Myrtle Sheldon  
Courtesy of Gutenberg.org

- Writers choose words carefully to show meaning.
- Inference
- Mental Picture
- Contrast
- Illustration
- Rhythm
- Rhyme

## Let's Review

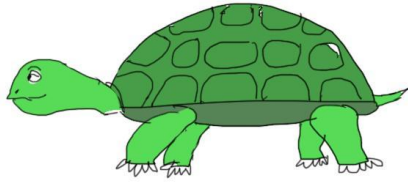
Theme – The lesson/moral/big idea of a text.



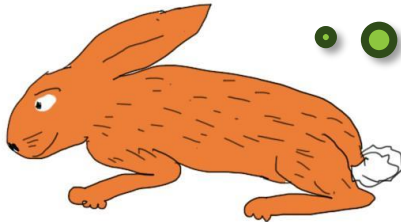
Slow and  
steady wins  
the race.

# Let's Review

Theme – The lesson/moral/big idea of a text.



What is going on in this text?



What does it mean to me?

The hare is faster

Slow and steady wins the race.

always win a race.

## Core Lesson

- 1 Reread the poem, reviewing all of the thinking you've done so far to determine what the poet wanted you to learn or realize.
- 2 Sum up the action in the poem. Ask: "What is happening in this text?"
- 3 Taking all these details together, ask: "What does it mean to me? What is the author's big idea about life or the world?"

# Core Lesson

Based on “The Land of Nod”, what does Robert Louis Stevenson believe about dreams?



## The Land of Nod

by Robert Louis Stevenson

*from, A Child's Garden of Verses (1916)*

From breakfast on through all the day  
At home among my friends I stay,  
But every night I go abroad  
Afar into the land of Nod.

All by myself I have to go,  
With none to tell me what to do--  
All alone beside the streams  
And up the mountain-sides of dreams.

The strangest things are these for me,  
Both things to eat and things to see,  
And many frightening sights abroad  
Till morning in the land of Nod.

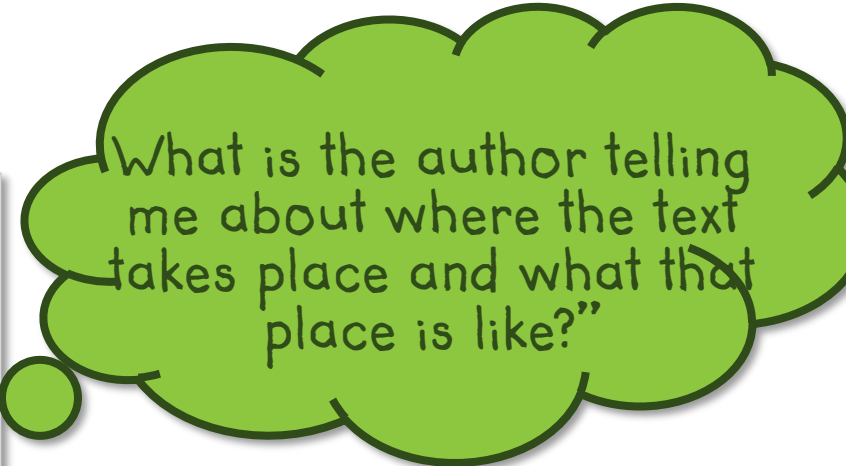
Try as I like to find the way,  
I never can get back by day,  
Nor can remember plain and clear  
The curious music that I hear.

Illustration by Myrtle Sheldon  
Courtesy of Gutenberg.org

## Core Lesson

# Inference

From breakfast on through all the day  
At home among my friends I stay,  
But every night I go abroad  
Afar into the land of Nod.



What is the author telling me about where the text takes place and what that place is like?"

Try as I like to find the way,  
I never can get back by day,  
Nor can remember plain and clear  
The curious music that I hear.

- Part of this poem is set in the real world.
- It's a boring, ordinary place.
- Nothing exciting here by day...is there someplace better?

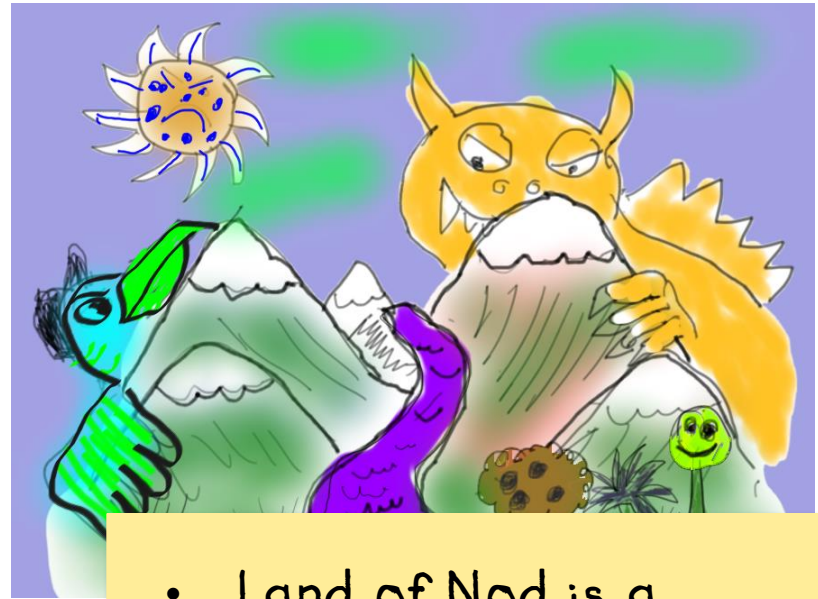


# Core Lesson

All by myself I have to go,  
With none to tell me what to do--  
All alone beside the streams  
And up the mountain-sides of dreams.

The strangest things are these for me,  
Both things to eat and things to see,  
And many frightening sights abroad  
Till morning in the land of Nod.

## Envisioning



- Land of Nod is a strange, scary place.
- Things in Nod are not like in the real world.
- It's a place you go to by yourself.

## Core Lesson

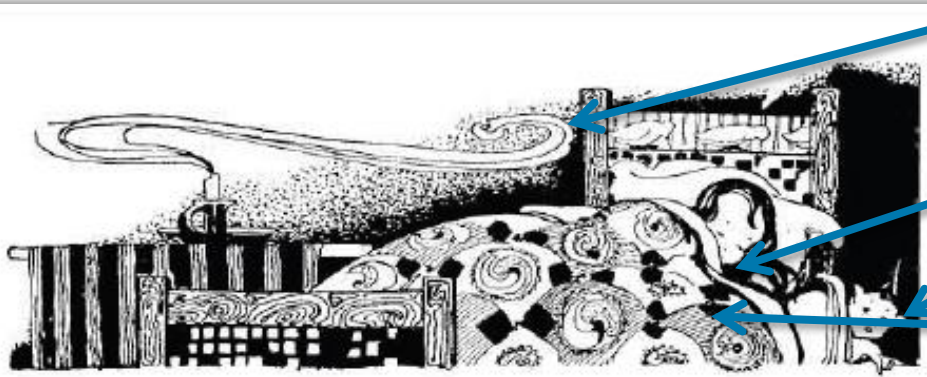
Using details from “The Land of Nod”, how does Robert Louis Stevenson contrast the real world and the land of Nod?

- He uses few words that are boring and ordinary to describe the real world.
- He then uses lots of words that are exciting and scary to describe the Land of Nod.
- His word choices show the real world as boring and ordinary, and the Land of Nod as exciting and scary.

Contrast

## Core Lesson

## Illustration



- To show that Nod is a land of dreams.
- To show that you can't go to Nod if you're not asleep.
- The Real World appears when you wake up.

# Core Lesson

What is the author trying to tell me using this pattern?

The strangest things are these for me, 8  
Both things to eat and things to see, 8  
And many frightening sights abroad 8  
Till morning in the land of Nod. 8

Try as I like to find the way, 8  
I never can get back by day, 8  
Nor can remember plain and clear 8  
The curious music that I hear. 8

- 4 beats per line.
- 8 syllables per line.
- Line 7 – 7 syllables. ?

- Land of Nod – Dreams
- Steady rhythm – going to sleep.

## Rhythm, or Meter

# Core Lesson

What is the author trying to tell me using this break in the pattern?

From breakfast on through all the day  
At home among my friends I stay,  
But every night I go abroad  
Afar into the land of Nod.

All by myself I have to go,  
With none to tell me what to do--  
All alone beside the streams  
And up the mountain-sides of dreams.

8

8

8

8

8

8

7

8

- Break - marker
- The real world ends – the Land of Nod begins.

← Starts describing Land of Nod.

# Core Lesson

What is the author trying to tell me using this pattern?

The strangest things are these for me, A  
Both things to eat and things to see, A  
And many frightening sights abroad B  
Till morning in the land of Nod. B

Try as I like to find the way, A  
I never can get back by day, A  
Nor can remember plain and clear B  
The curious music that I hear. B

- AABB Rhyme scheme.
- 2<sup>nd</sup> Stanza – ABCC, a break in the pattern. ?

- Land of Nod – Dreams
- Even rhyme scheme – going to sleep.

## Rhyme scheme

# Core Lesson

What is the author trying to tell me using this break in the pattern?

From breakfast on through all the day  
At home among my friends I stay,  
But every night I go abroad  
Afar into the land of Nod.

A

A

B

B

All by myself I have to go,  
With none to tell me what to do -  
All alone beside the streams  
And up the mountain-sides of dreams.

A

B

C

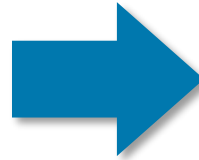
C

- Break - marker
- The real world ends – the Land of Nod begins.

Starts describing Land of Nod.

## Core Lesson

- Inference – real world.
- Envisioning – Nod.
- Contrast between Nod and real world
- Illustration
- Rhythm
- Rhyme



What is happening in the text?

- A boy lives a pretty ordinary life.
- He escapes his ordinary life at night, when he falls asleep and dreams of the land of Nod.
- Nod is a strange, exciting place, and he can only get there by dreaming.
- During the day, he wants to go back but can't.



# Core Lesson

From breakfast on through all the day  
At home among my friends I stay,  
But every night I go abroad  
Afar into the land of Nod.

All by myself I have to go,  
With none to tell me what to do--  
All alone beside the streams  
And up the mountain-sides of dreams.

Do I have evidence  
from the text?

- A boy lives a pretty ordinary life.
- He escapes his ordinary life at night, when he falls asleep and dreams of the land of Nod.
- Nod is a strange, exciting place, and he can only get there by dreaming.
- During the day, he wants to go back but can't.

# Core Lesson

The strangest things are these for me,  
Both things to eat and things to see,  
And many frightening sights abroad  
Till morning in the land of Nod.

Try as I like to find the way,  
I never can get back by day,  
Nor can remember plain and clear  
The curious music that I hear.

Do I have evidence  
from the text?

- A boy lives a pretty ordinary life.
- He escapes his ordinary life at night, when he falls asleep and dreams of the land of Nod.
- Nod is a strange, exciting place, and he can only get there by dreaming.
- During the day, he wants to go back but can't.

# Core Lesson

- A boy lives a pretty ordinary life.
- He escapes his ordinary life at night, when he falls asleep and dreams of the land of Nod.
- Nod is a strange, exciting place, and he can only get there by dreaming.
- During the day, he wants to go back but can't.

“What is the author's big idea about life or the world?”

What does it mean to me?

Dreams are an important part of our lives.

## Core Lesson

Based on “The Land of Nod”, what does Robert Louis Stevenson believe about dreams?

- Robert Louis Stevenson believes that dreams are important to our lives.
- They help us escape from our own everyday lives into something amazing.
- If life is getting boring, just fall asleep and find something exciting.
- If a dream is too scary, we can always wake up.

## Core Lesson

- 1 Reread the poem, reviewing all of the thinking you've done so far to determine what the poet wanted you to learn or realize.
- 2 Sum up the action in the poem. Ask: "What is happening in this text?"
- 3 Taking all these details together, ask: "What does it mean to me? What is the author's big idea about life or the world?"

In this lesson you have  
learned how to identify the  
theme of a text by  
determining meaning from  
clues in the text.